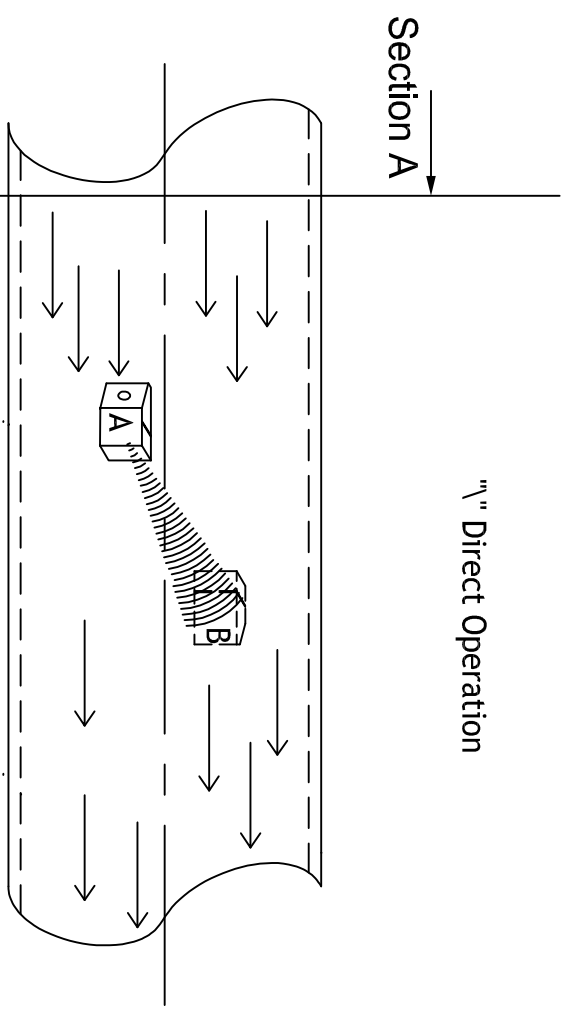
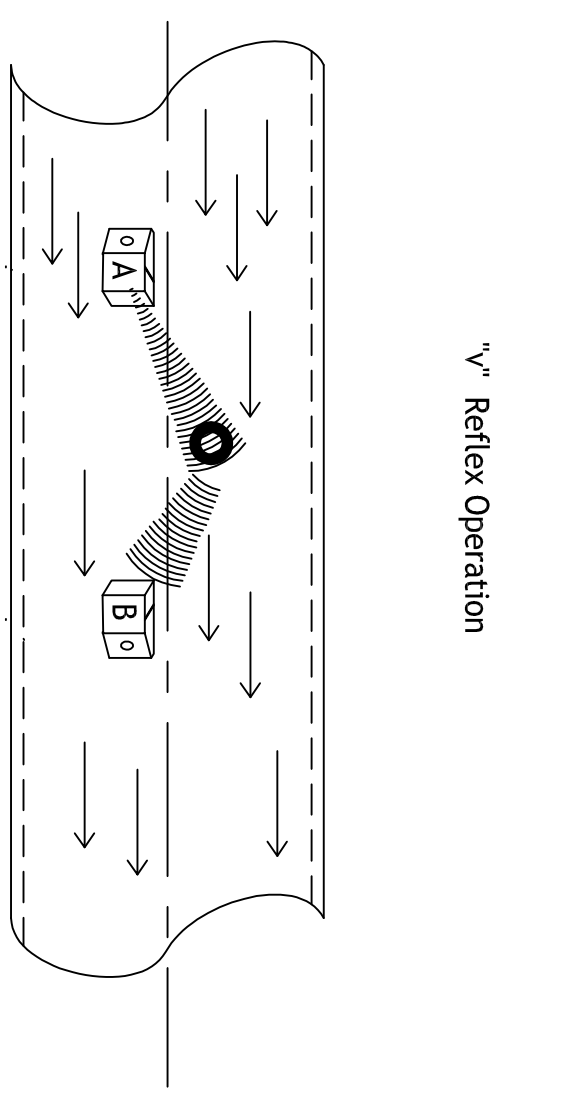


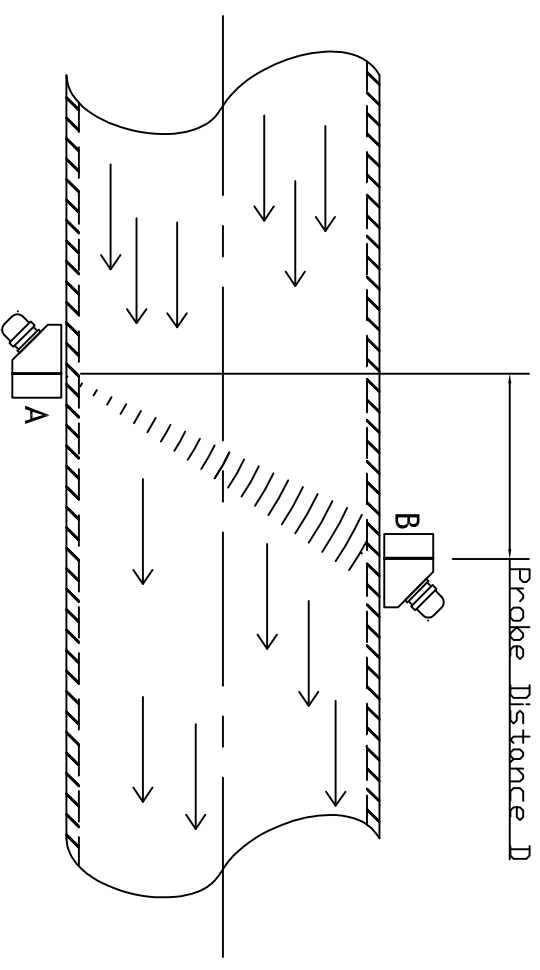
Ensure that probes are placed anywhere from 30 Deg vertical to avoid Air bubbles or sediments



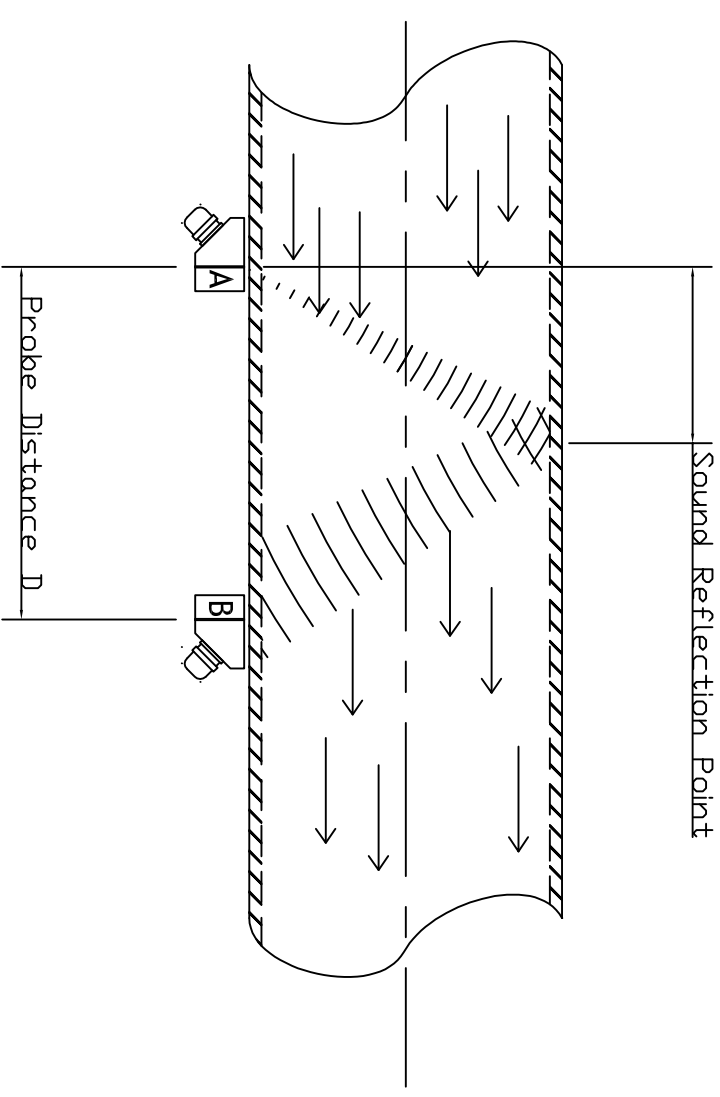
"v" Direct Operation



"v" Reflex Operation



Please note:  
Probe A is placed upstream and probe B is placed down stream.  
Unit will read a negative flow if probes are reversed.



**NOTES :**  
Probe Orientation selected, when pipe diameter, pipe composition, pipe thickness and media have been configured, the Ultraflex unit will specify the separation distance of the probes "D". As sound wave is adversely affected by air, a suitable coupling gel must be applied to the contact area of the probe. It may be necessary to remove any debris, rust, loose paint to improve the contact of the probes prior to fitting.

Scale		NTS		Tolerance +/- 0.1mm unless stated	
Author	Name	Date	Project:		
J.Taylor	J.Taylor	21/8/13	Probe setup example		
Check			Client:		
Approved			Flowline		
Issue	Revision	Size	Date	3rd Angle	Issue
					A
					Dimensions in MM